



POETS

Robert Pilawa-University of Illinois

AN NSF SPONSORED CENTER

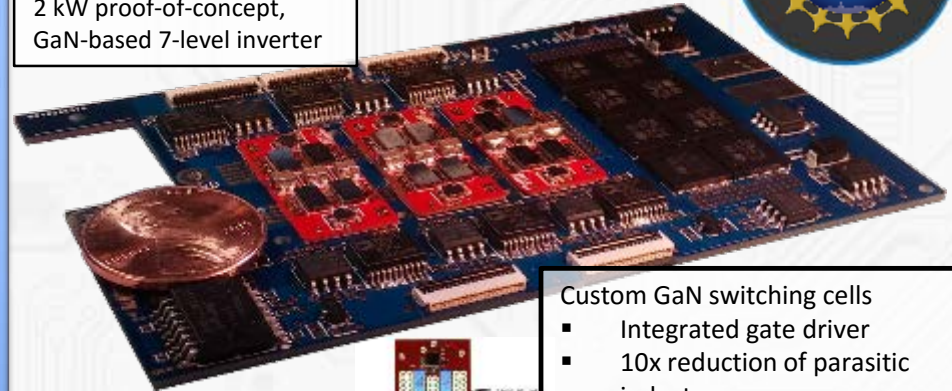


- Power electronics
 - Extreme power densities
 - GaN, SiC
- CMOS integrated circuits
- Electric drives
- Advanced control techniques for power electronics
- Renewable energy integration, grid storage



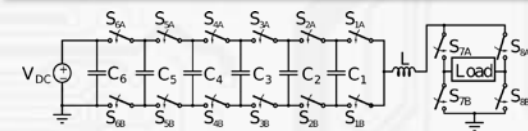
pilawa@illinois.edu

2 kW proof-of-concept, GaN-based 7-level inverter

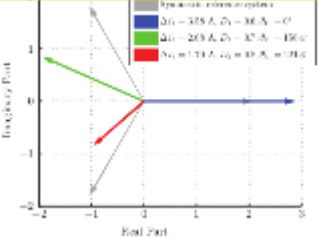


High Power Inverters

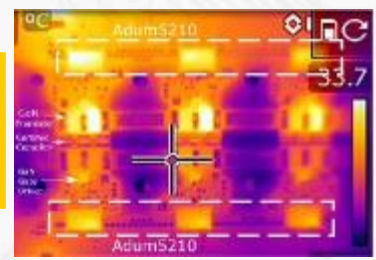
- Custom GaN switching cells
 - Integrated gate driver
 - 10x reduction of parasitic inductance
 - Enables multi-MHz switching speeds



Multi-phase interleaved massively scalable system

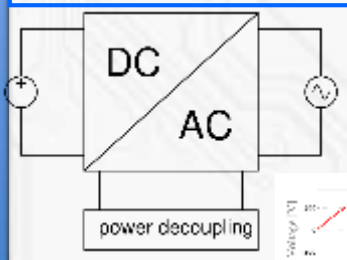


Real-time control for thermal management

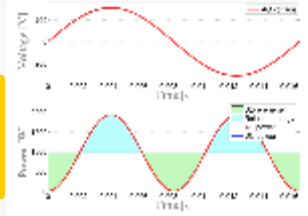


Advanced Digital Control Techniques

Grid-interfaced converters



New architectures for single-phase grid integration



Extreme efficiency bi-directional EV charger

