



POETS

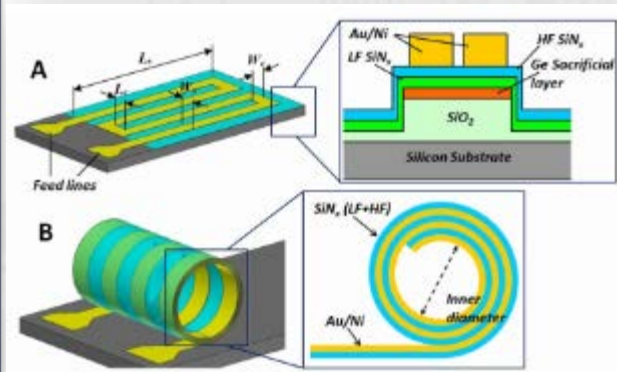
Xiuling Li - University of Illinois

AN NSF SPONSORED CENTER

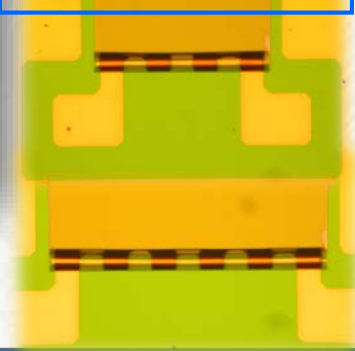


- Semiconductor materials and devices
- Self-rolled-up membrane (S-RuM) nanotechnology
- Miniaturization of passive electronic devices and components

<http://mocvd.ece.illinois.edu>

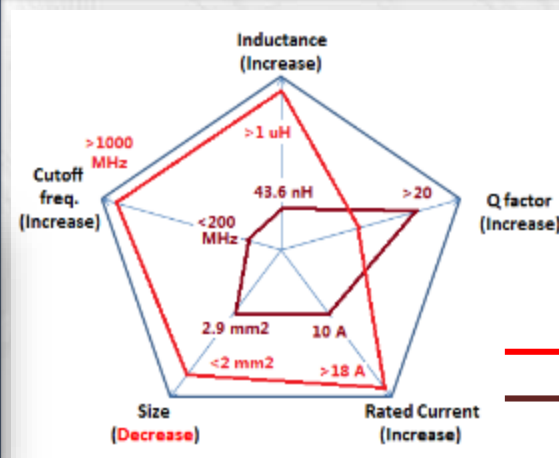
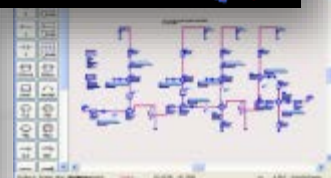
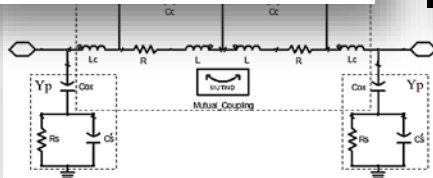
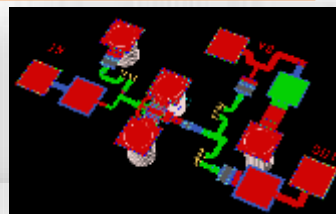
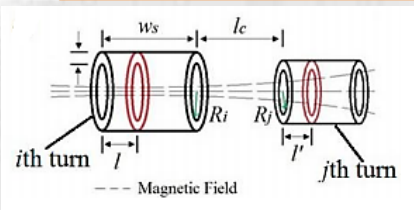


Fabricated Cu-based S-RuM Inductors



Experimental approaches

Physical Modeling and Design Integration



Management of Size, Inductance, Frequency, and Current Handling Capability

— **S-RuM Power Inductor**
 — **State-of-art on-chip power inductor**