



POETS

# Bill King-University of Illinois

AN NSF SPONSORED CENTER

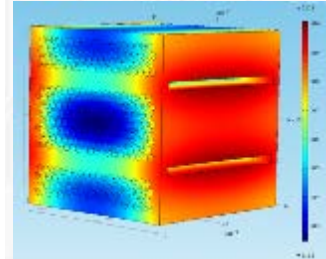
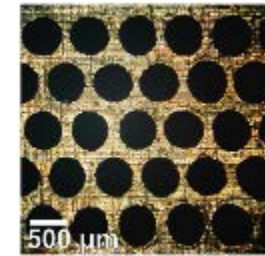
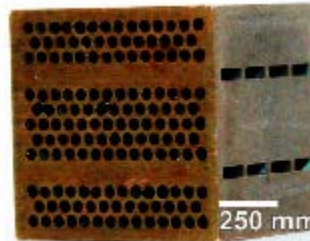


- Heat transfer at small scales
- Exploiting and integrating advanced materials for electro-thermal applications
- Design and manufacturing, product innovation



<http://http://kinglab.mechse.illinois.edu/>

Miniature Heat Exchanger

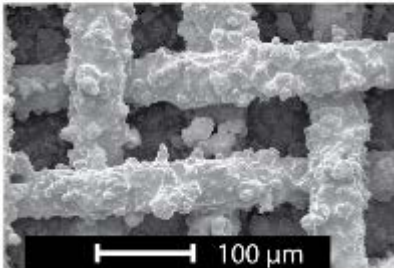


Design and Manufacturing, Product Innovation

Heat transfer at small scales

Exploiting and integrating advanced materials

Copper Mesh (200) with ZnO Nanoparticles



Mesh + Nanoparticles



Pyroelectric Energy Conversion

