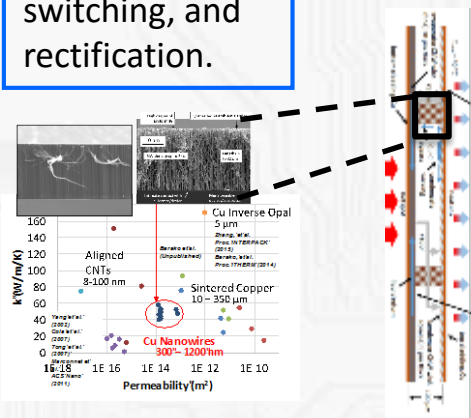




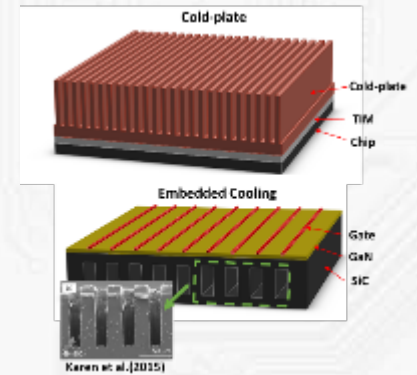
- Embedded cooling for high power electronic devices.
- High performance liquid/vapor two-phase heat transfer systems.
- Phase routing strategies for dielectric liquids.

<http://nanoheat.stanford.edu>

Heat spreading, switching, and rectification.



Nanomaterials for vapor chamber



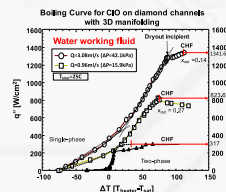
Interlayer cooling

Electronics Thermal Management at the Extremes

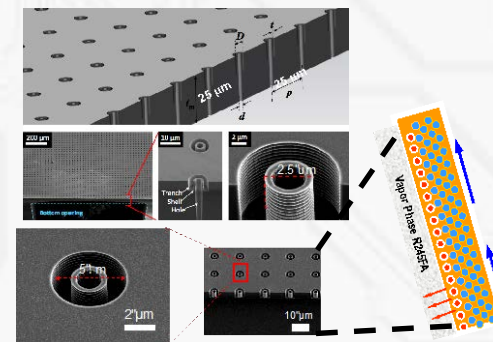


Spreading by Etched Diamond Channels

Nanomaterials for phase change heat transfer

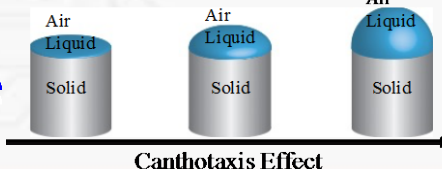
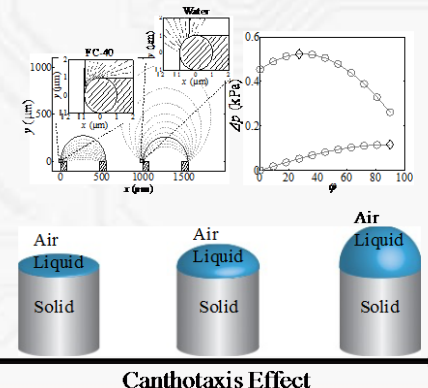


Phase routing for two-phase systems



Microfabricated phase separator

Theory for liquid retention



Canthotaxis Effect